

## TIME

### Version

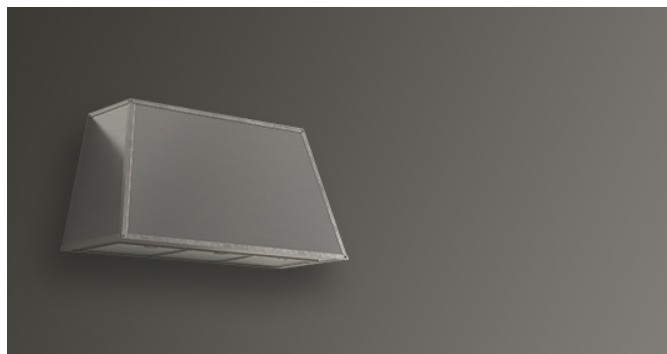
Wall 115 cm, Stainless steel, worn steel trim, 800 m<sup>3</sup>/h

### Collection

Classic

### EAN code

8034122477534



*The photograph is purely for information  
It may not correspond to the selected version.*

## FEATURES

**Electronic control**

**LED lighting**

**Metallic grease filter, removable and washable**

**Charcoal filter included**

**Optional remote control**

## OPTIONAL ACCESSORIES

### **KACL.770#41F**

Remote under-roof 1100 m<sup>3</sup>/h

Brushless

### **KACL.786#41F**

Outdoor extractor fan 1000 m<sup>3</sup>/h

### **KACL.796#4AF**

Outdoor extractor fan 1500 m<sup>3</sup>/h

### **KACL.797#4AF**

Remote under-roof motor 1300 m<sup>3</sup>/h

### **KACL.798#41F**

Remote under-roof motor 950 m<sup>3</sup>/h

### **105080053**

Remote control

## TECHNICAL FEATURES

### Installation type

Wall

### Dimensions

115 cm cm

### Finishing

Stainless steel

Stainless steel, antique steel edge

### Motor

800 m<sup>3</sup>/h

### Type of control

Electronic control

## PACKAGING:WEIGHTS AND VOLUMES

### Gross weight

27.4 kg

### Net weight

22.2 kg

### Volumes

0.43 m<sup>3</sup>

### Packaging size

Length

1310 mm

Height

550 mm

Depth

595 mm

## CONSUMPTION AND CONNECTION FEATURES

### Maximum consumption

280 W

### Voltage

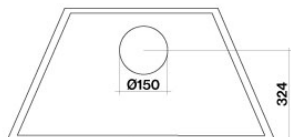
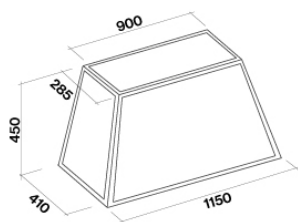
220-240V

### Frequency

50-60Hz

### ENERGY CLASS

A



Rear view

## TIME

### Version

Wall 115 cm, Stainless steel,  
worn steel trim, 800 m<sup>3</sup>/h

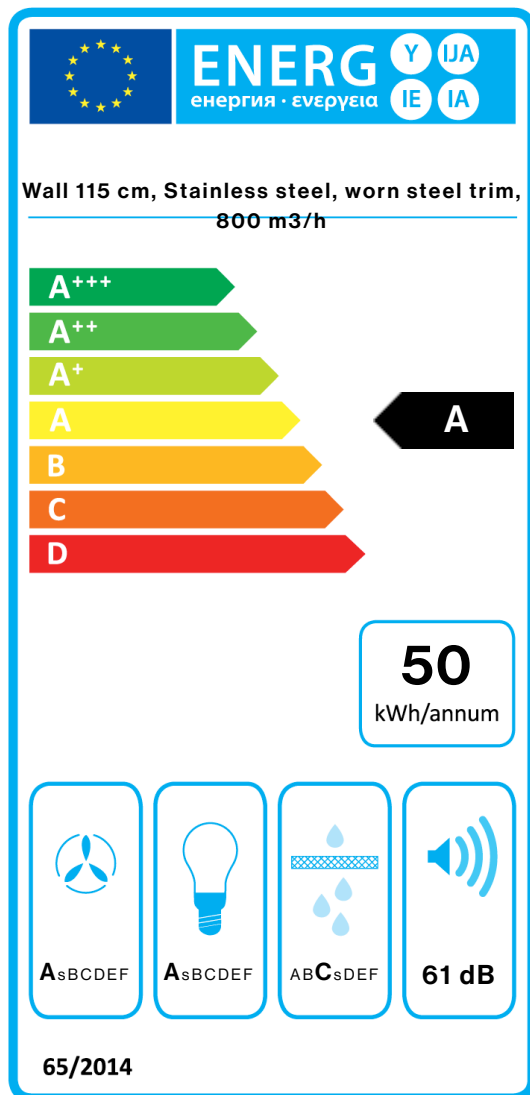
### Collection

Classic

### EAN code

8034122477534

## ENERGY LABEL



PF		
<b>S</b>	Falmec Spa	
<b>M</b>	Wall 115 cm, Stainless steel, worn steel trim, 800 m <sup>3</sup> /h	
<b>AEC</b>	49,5	kWh/a
<b>EEC</b>	A	
<b>FDE</b>	32,6	
<b>FDEC</b>	A	
<b>LE</b>	31,4	
<b>LEC</b>	A	
<b>GFE</b>	80,0	
<b>GFEC</b>	C	
<b>Qmin</b>	240,0	m <sup>3</sup> /h
<b>Qmax</b>	460,0	m <sup>3</sup> /h
<b>Qboost</b>	700,0	m <sup>3</sup> /h
<b>SPEmin</b>	49	dBa
<b>SPEmax</b>	61	dBa
<b>SPEboost</b>	66	dBa
<b>PO</b>	-	W
<b>PS</b>	0,48	W
PI		
<b>F</b>	0.8	
<b>EEL</b>	48,8	
<b>Qbep</b>	453,0	m <sup>3</sup> /h
<b>Pbep</b>	383	Pa
<b>Qboost</b>	700,0	m <sup>3</sup> /h
<b>Wbep</b>	148,0	W
<b>WL</b>	8,60	W
<b>Emiddle</b>	270	lux
<b>Lwa-SPEmax</b>	61	dBa

**PF\_Product fiche according to 65/2014** S\_Supplier name / M\_Model identification / AEC\_Annual Energy Consumption (AEC hood) / EEC\_Energy Efficiency class / FDE\_Fluid Dynamic Efficiency (FDE hood) / FDEC\_Fluid Dynamic Efficiency class / LE\_Lighting Efficiency (LE hood) / LEC\_Lighting Efficiency class / GFE\_Grease Filtering Efficiency / GFEC\_Grease Filtering Efficiency class / Qmin\_Air flow (in m<sup>3</sup>/h) at min speed in normal use / Qmax\_Air flow (in m<sup>3</sup>/h) at max speed in normal use / Qboost\_Air flow (in m<sup>3</sup>/h) at intensive or boost setting (max air-flow) / SPEmin\_Airborne acoustical A-weighted sound power emissions at min speed in normal use / SPEmax\_Airborne acoustical A-weighted sound power emissions at max speed in normal use / SPEboost\_Airborne acoustical A-weighted sound power emissions (in dB) at intensive or boost setting / PO\_Power consumption in off mode (Po) / Ps\_Power consumption in stand by mode (Ps). **PI\_Additional information according to 66/2014** F\_Time increase factor / EEI\_Energy Efficiency Index / Qbep\_Measured air flow rate at best efficiency point / Pbep\_Measured air pressure at best efficiency point / Qboost\_Maximum air flow / Wbep\_Measured electric power input at best efficiency point / WL\_Nominal power of the lighting system / Emiddle\_Average illumination of the lighting system on the cooking surface / Lwa-SPEmax\_Sound pressure level at the highest speed.